

Previewing post-OS migration application states

Before deploying the OS Deployment Task Sequence, you can preview the effect that Application Migration will have on the software installed on a device. This can be for existing or new build devices. This is done from **Preview Device**, where you can see the following menu items:

Menu item	Description
Existing Device	Post-migration application status for existing computers undergoing an in-place upgrade or a computer refresh.
New Device	Applications to be installed on new-build computers by Management Groups or device attributes.

Applications not subject to migration rules behave differently depending on the type of OS deployment, as follows:

- **Computer refresh** also known as **wipe and load** - applications for which no migration rule exists will be removed, that is not reinstalled when the new OS is installed)
- **In-place upgrade** - applications for which no migration rule exists are retained, as in-place upgrade does not remove any applications
- **Computer replacement** - if the device is being replaced and either a Computer Association defined in Configuration Manager or the 1E Windows Self-service Assistant is being used for the replacement, applications for which no migration rule exists will not be installed on the new device. To preview the results of a replacement, select the old device and the Wipe-and-load option.
- **New devices** - for completely new computers you can use the Preview Device feature to see which [Role-based Applications](#) will be installed on a new device. As the new device does not exist, you need to either select the specific Management Group that the computer *will* exist in once it is built, or define the attributes (name, AD Site or OU, or any combination of these) that the computer *will* have when it is built.

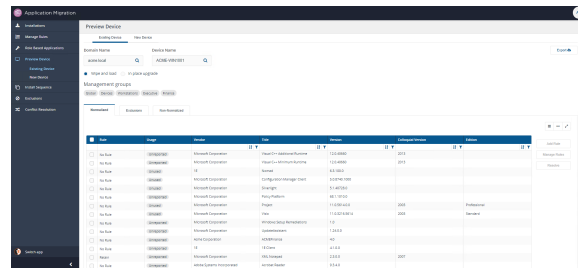
On this page:

- [Previewing applications installed on existing devices post-migration](#)
 - Behavior of the post-migration preview screen and table
 - Normalized
 - Exclusions
 - Non-normalized
- [Previewing applications to be installed on new devices](#)
 - By management groups
 - By device attributes
- [Exporting device preview information](#)
 - Existing Devices
 - New Devices

Previewing applications installed on existing devices post-migration

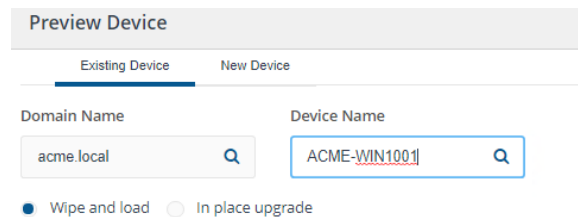
When you preview a computer, you'll be able to see the following information:

- Management groups associated with the computer
- Products installed on the computer along with their usage statistics
- Migration rule statuses:
 - No rule – if a rule has not been set up
 - Retain, Replace, Upgrade rules – if they are set up
 - Conflict – if there are conflicting rules for that particular product.
- Excluded applications on the computer
- Applications on the computer which have not been normalized.



To get a post-migration preview of an existing computer:

1. Under the **Preview Device** menu click **Existing Device**.
2. Choose the type of deployment you want - **Wipe and Load** or **In-place upgrade**.
3. In both **Domain Name** and **Device Name** fields, start typing a name and a list matching your string is dynamically displayed for you to choose from.

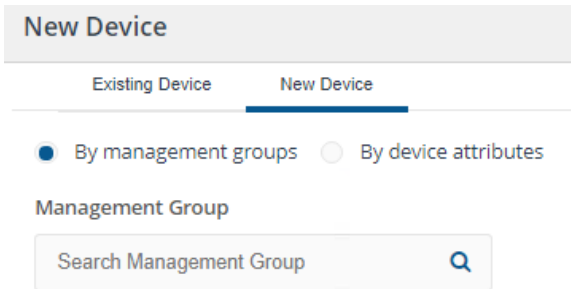


Behavior of the post-migration preview screen and table

In our example, we are going to preview the **Wipe and load** post-migration application state for **ACME-WIN1001** which is in the **ACME.local** domain.

When we selected ACME-WIN1001 as **Device Name**, the Global, Devices, Workstations, Executive and Finance Management Groups are identified. ACME-WIN1001 is member of all these Management groups. If a computer is a member of more than one Management Group, they will be identified under the **Management groups** heading. Below this heading, is the details table which is made up of three tabs:

- **By device attributes.**

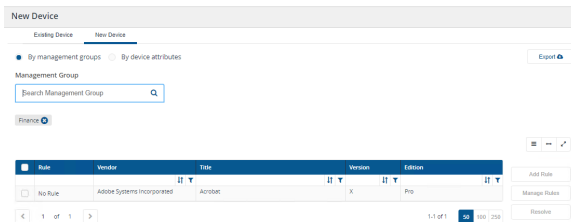


By management groups

1. On the **New Device** screen, select **By management groups**.
2. In **Management Group** start typing the name of a Management Group. A list matching your search string is displayed for you to choose from.
3. The table shows applications that will be installed on new builds complying with the rules assigned to that Management Group and the Role-based Application Sets you create and associate with it.

You can choose more than one Management Group to preview. If the list of applications is incorrect, you can update the Role-Based Application Set you created and run the preview again.

You can also add and manage Application Migration rules from this view for any of the listed applications by clicking **Add Rule**.

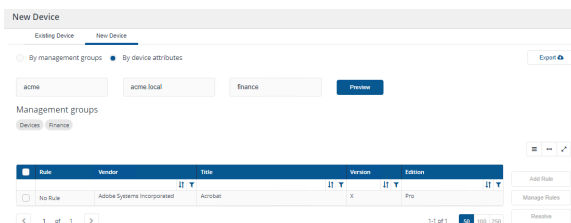
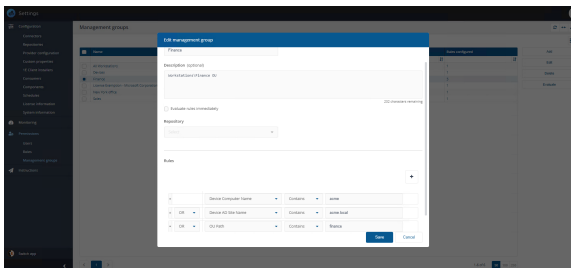


By device attributes

1. On the **New Device** screen select **By device attributes**.
2. You only need to know the details of any one of the three attributes to retrieve the list of applications for installation on new builds:
 - a. **Device Name**
 - b. **Active Directory Site**
 - c. **Organizational Unit.**

For example:

1. We created the **Finance** Management group with the following rules:
 - **Device name** contains **acme**
 - **Active Directory Site** name is **acme.local**
 - **Organizational Unit** is **finance**.
2. On the **Preview Machine** screen, we start typing the name of a computer, the AD site or the OU. In our illustration, we have populated the computer attribute fields with the values from the rule we created for the **Finance** Management group.
3. The table shows applications that will be installed on new builds complying with the rules assigned to that Management Group and the Role-based Application Sets you create and associate with it.



For more information about Management groups and how to use them, please refer to [Tachyon Platform 5.2 - Management groups](#).

Exporting device preview information

You can export the device preview information to an Excel spreadsheet using the **Export** button at the top-right of the interface. This information can be presented to end-users to give them some indication of the software that will be present on their device post-OS migration.

The information in the exported file is described in the following tables for **Existing Devices** and **New Devices**:

Existing Devices

The information in the exported file, **ExistingDeviceWipeAndLoad.xlsx** is described in the following tables for **Existing Devices** (one per sheet in the Excel file):

The Normalized sheet

Column	Description
Rule	List to identify the type of migration rule. Values are: <ul style="list-style-type: none"> • Replace • Upgrade • Retain • No Rule.
Usage	Usage category for the product to be migrated. Values are: <ul style="list-style-type: none"> • Any Usage • Used • Rarely Used • Unused • Unreported • Used Rarely Used • Used Unused • Used Unreported • Rarely Used Unused • Rarely Used Unreported • Unused Unreported • Used Rarely Used Unused • Used Rarely Used Unreported • Used Unreported Unused • Rarely Used Unused Unreported.
Source Vendor	Vendor of the product to be migrated.
Source Title	Title of the product to be migrated.
Source Version	Version of the product to be migrated. An asterisk (*) denotes all versions – dot (.) format.
Source Colloquial Version	Version of the product to be migrated, colloquial version.
Source Edition	Edition of the product to be migrated.
Target Vendor	Vendor of the product for the migration rule.
Target Title	Title of the product for the migration rule.
Target Version	Version of the product for the migration rule. Can be in a dot format or colloquial versions.
Target Edition	Edition of the product for the migration rule.

The Exclusions sheet

Column	Description
Rule	List to identify the type of migration rule. Values are: <ul style="list-style-type: none"> • Replace • Upgrade • Retain • No Rule.
Vendor	Vendor of the product to be excluded.
Title	Title of the product to be excluded.
Version	Version of the product to be excluded. An asterisk (*) denotes all versions – dot (.) format.
Colloquial Version	Version of the product to be excluded, colloquial version.
Edition	Edition of the product to be excluded .

The Non-Normalized sheet

Column	Description
--------	-------------

Rule	List to identify the type of migration rule. Values are: <ul style="list-style-type: none"> • Replace • Upgrade • Retain • No Rule.
Vendor	Vendor of the product to be migrated.
Title	Title of the product to be migrated.
Version	Version of the product to be migrated. An asterisk (*) denotes all versions – dot (.) format.
Colloquial Version	Version of the product to be migrated, colloquial version.
Edition	Edition of the product to be migrated.

New Devices

The information in the exported file, **NewDeviceByDeviceAttributes.xlsx** is described in the following table for **New Devices** :

Sheet1

Column	Description
Rule	List to identify the type of migration rule. Values are: <ul style="list-style-type: none"> • Replace • Upgrade • Retain • No Rule.
Source Vendor	Vendor of the product to be migrated.
Source Title	Title of the product to be migrated.
Source Version	Version of the product to be migrated. An asterisk (*) denotes all versions – dot (.) format or colloquial versions.
Source Edition	Edition of the product to be migrated.
Target Vendor	Vendor of the product for the migration rule.
Target Title	Title of the product for the migration rule.
Target Version	Version of the product for the migration rule. Can be in a dot format or colloquial versions.
Target Edition	Edition of the product for the migration rule.