

The Restore User Data and Applications user experience

The user experience

This section describes what users experience when they choose to restore their data and applications to a new computer. In each phase of the deployment, we will illustrate what is likely to happen and how to mitigate errors when they arise.

There are five phases you can have for this deployment type:

1. [Choosing the deployment](#)
2. [Getting the name of the machine to restore data from](#)
3. [Displaying a summary of their actions](#)
4. [Running background checks](#)
5. [The outcome of the deployment](#)

Your browser does not support the HTML5 video element

Walking you through the user experience

Banner on the Shopping Web

Start here



The Start screen

Choosing the type of deployment

1E Windows Servicing Assistant - Restore My Data and Apps to a New PC

1 Start — 2 Old PC — 3 Applications — 4 Summary — 5 Readiness — 6 Complete

Please choose from the available options

- Prepare My Old PC For Replacement
- Reinstall Windows on My PC
- Reinstall Windows on My PC (Change Disk Format)
- Restore My Data and Apps to a New PC
- Upgrade to Windows 1703

Cancel Back Next

The Old PC screen

Locating the old computer

1E Windows Servicing Assistant - Restore My Data and Apps to a New PC

1 Start — 2 Old PC — 3 Applications — 4 Summary — 5 Readiness — 6 Complete

Select machine to restore data from

Ok, we will restore your data and applications from one of the machines below to this PC.

Select machine

Acme\Old-PC

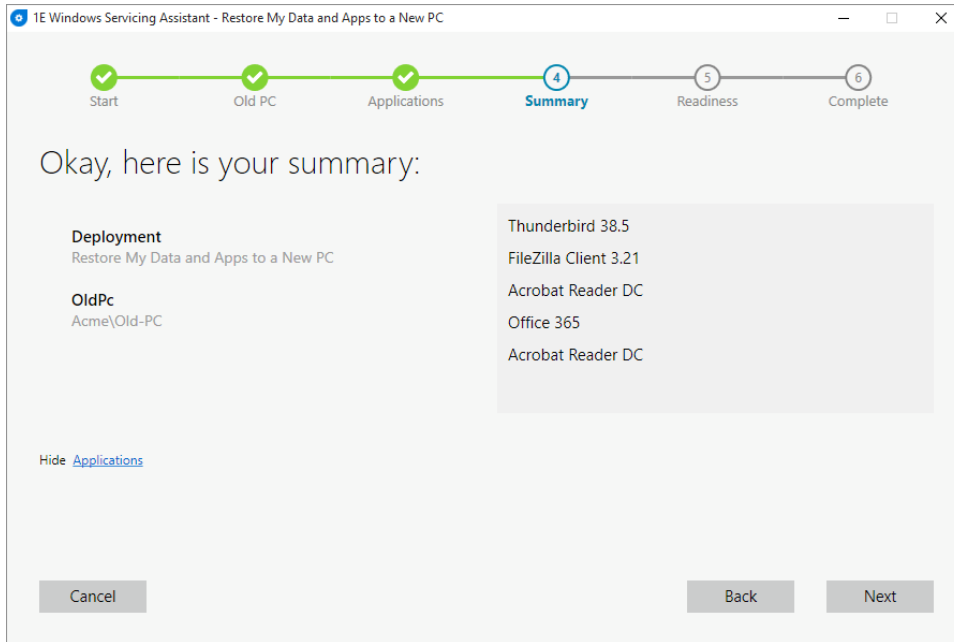
Cancel Back Next

The USB Media screen

Requesting additional storage	Observations
	Only displayed if a USB device was required when you ran the Replace Capture deployment.

The Summary screen

A quick summary



The Readiness screen

A quick summary

1E Windows Servicing Assistant - Restore My Data and Apps to a New PC

Start Old PC Applications Summary **5 Readiness** 6 Complete

Getting things ready

System Check in progress...

[Details...](#)

This may take some time. What would you like to do?

- I'm done. Go ahead and Restore My Data and Apps to a New PC as soon as everything is ready
- I want to continue working. Let me know when everything is ready

Cancel Back Next

The Complete screen

The results of the deployment

The screenshot shows a window titled "1E Windows Servicing Assistant - Restore My Data and Apps to a New PC". At the top, a progress bar consists of six steps: "Start", "Old PC", "Applications", "Summary", "Readiness", and "Complete". Each step has a green checkmark, and the "Complete" step is highlighted with a blue circle containing the number 6. Below the progress bar, the main text reads "Restore My Data and Apps to a New PC completed successfully!". Underneath this, a green checkmark icon is followed by the text "Congratulations! The migration has completed successfully. You are now free to use your PC." In the bottom right corner of the window, there is a grey button labeled "Done".