

# Using Tachyon in Configuration Manager

## Summary

How to use the Tachyon Configuration Manager extensions. The Tachyon Configuration Manager extensions are an optional part of the Tachyon Toolkit.

## In this section...

### Stopping and resuming the ConfigMgr Client Service - Tutorial

A quick tutorial on stopping and resuming the ConfigMgr Client Service in response to an emergency.

### Tachyon Instruction Runner

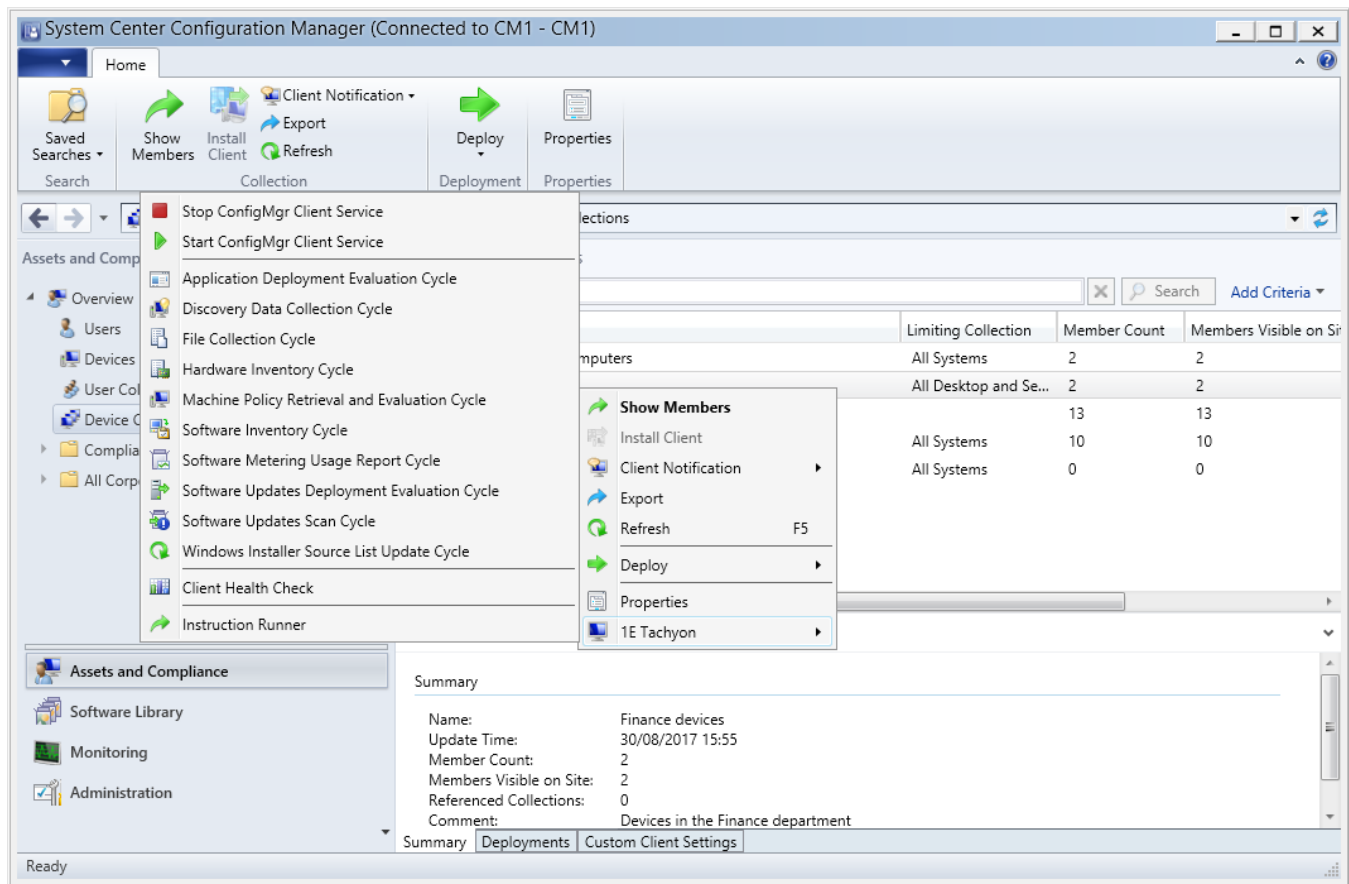
How to use the Tachyon Instruction Runner to submit questions and actions from Configuration Manager. The Tachyon Instruction Runner is a right-click tool for the Configuration Manager console which starts a client-based version of the Tachyon web-based Explorer, which is limited to devices in a Collection.

#### On this page:

- [Options available on the Tachyon menu](#)
  - [Configuration Manager Agent emergency stop and resume actions](#)
  - [Configuration Manager Agent actions](#)
  - [Client Health Check](#)
  - [Instruction Runner](#)

## Options available on the Tachyon menu

Once the Tachyon Configuration Manager extensions have been installed, a **1E Tachyon** sub-menu gets added to the context menu for device collections or devices. The following picture shows the Tachyon sub-menu on the context menu for the **All Systems** device collection.



Most of the menu items, with the exception of the last **Instruction Runner**, work by getting Tachyon to perform an action where the coverage is set to a list of the FQDN of the Tachyon Agent devices that are members of the selected device collection. The actions must be approved using the Tachyon Explorer before they are performed on the target Tachyon Agent Devices.

There are four sections in the sub-menu, these sections, the menu items and associated Tachyon actions are described in the following table:

Section	Menu item	Tachyon Action	Notes
---------	-----------	----------------	-------

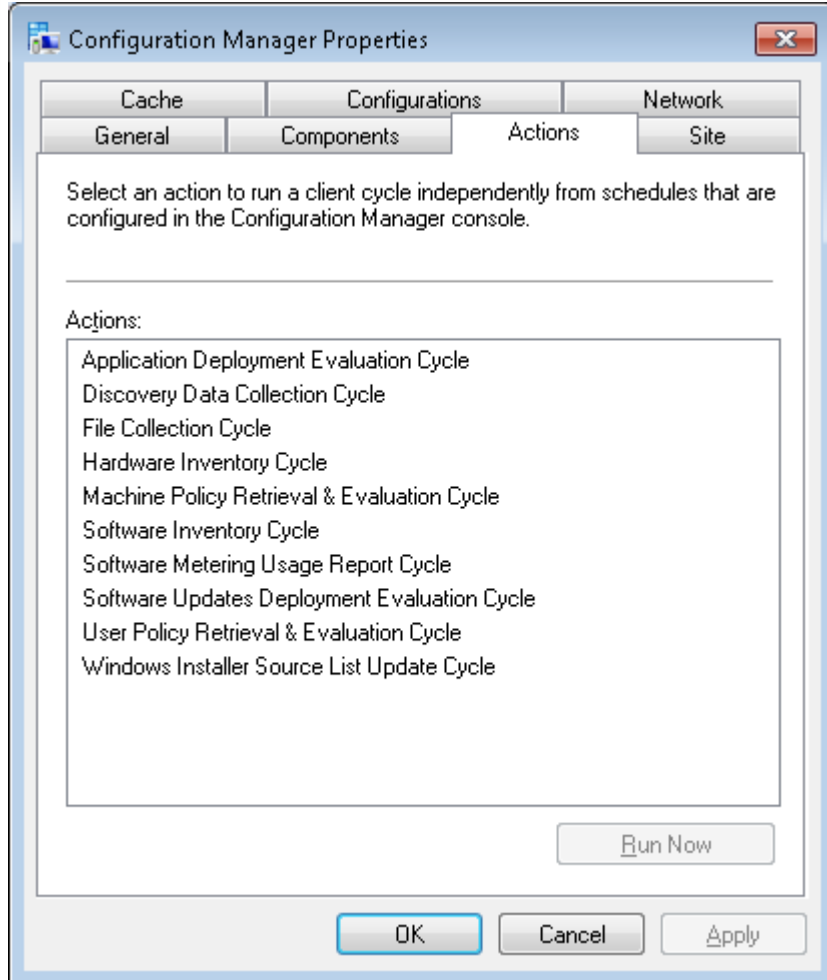
## Configuration Manager Agent emergency stop and resume actions

These options can be used in emergency situations where the Configuration Manager Agent needs to be stopped immediately to prevent certain actions from taking place.

A tutorial showing the stopping and restarting of the ConfigMgr Client Service is provided in [Stopping and resuming the ConfigMgr Client Service - Tutorial](#).

## Configuration Manager Agent actions

These options provide a quick method for immediately invoking each of the Configuration Manager Agent actions via Tachyon, as shown in the following picture:



The one notable exception is that the **User Policy Retrieval & Evaluation Cycle** is not implemented because this must be run in the context of a specific user.

Stop ConfigMgr Client Service	Emergency shutdown and disable the ConfigMgr client service	Stops and then disables the CcmExec service on the target devices.
Resume ConfigMgr Client Service	Restart and enable the ConfigMgr client service with maximum stagger of 3600	Enables and then starts the CcmExec service on the target devices with a random delay between 1 and 3600 seconds.
Application Deployment Evaluation Cycle	Trigger SCCM 2012 client application deployment evaluation cycle with maximum stagger of <maxStagger> seconds	Runs the Application Deployment Evaluation Cycle on the target devices with a random delay of <maxStagger> seconds.  Where <maxStagger> is calculated when the action is selected according to the number of target devices. This is done so that the CM site server will be hit by no more than 10 devices per second.
Discovery Data Collection Cycle	Trigger SCCM 2012 client discovery data collection cycle with maximum stagger of <maxStagger> seconds	Runs the Discovery Data Collection Cycle on the target devices with a random delay of <maxStagger> seconds. See <b>Notes for Application Deployment Evaluation Cycle</b> above.
File Collection Cycle	Trigger SCCM 2012 client file collection cycle with maximum stagger of <maxStagger> seconds	Runs the File Collection Cycle on the target devices with a random delay of <maxStagger> seconds. See <b>Notes for Application Deployment Evaluation Cycle</b> above.
Hardware Inventory Cycle	Trigger SCCM 2012 client hardware inventory cycle with maximum stagger of <maxStagger> seconds	Runs the Hardware Inventory Cycle on the target devices with a random delay of <maxStagger> seconds. See <b>Notes for Application Deployment Evaluation Cycle</b> above.
Machine Policy Retrieval and Evaluation Cycle	Trigger SCCM 2012 machine policy retrieval & evaluation cycle with maximum stagger of <maxStagger> seconds	Runs the Machine Policy Retrieval & Evaluation Cycle on the target devices with a random delay of <maxStagger> seconds. See <b>Notes for Application Deployment Evaluation Cycle</b> above.
Software Inventory Cycle	Trigger SCCM 2012 software inventory cycle with maximum stagger of <maxStagger> seconds	Runs the Software Inventory Cycle on the target devices with a random delay of <maxStagger> seconds. See <b>Notes for Application Deployment Evaluation Cycle</b> above.
Software Metering Usage Report Cycle	Trigger SCCM 2012 software metering usage report cycle with maximum stagger of <maxStagger> seconds	Runs the Software Metering Usage Report Cycle on the target devices with a random delay of <maxStagger> seconds. See <b>Notes for Application Deployment Evaluation Cycle</b> above.

	Software Updates Deployment Evaluation Cycle	Trigger SCCM 2012 software updates deployment evaluation cycle with maximum stagger of <maxStagger> seconds	Runs the Updates Deployment Evaluation Cycle on the target devices with a random delay of <maxStagger> seconds. See <b>Notes for Application Deployment Evaluation Cycle</b> above.
	Software Updates Scan Cycle	Trigger SCCM 2012 software updates scan cycle with maximum stagger of <maxStagger> seconds	Runs the Software Updates Scan Cycle on the target devices with a random delay of <maxStagger> seconds. See <b>Notes for Application Deployment Evaluation Cycle</b> above.
	Windows Installer Source List Update Cycle	Trigger SCCM 2012 Windows installer source list update cycle with maximum stagger of <maxStagger> seconds	Runs the Windows Installer Source List Update Cycle on the target devices with a random delay of <maxStagger> seconds. See <b>Notes for Application Deployment Evaluation Cycle</b> above.
<b>Client Health Check</b>	Client Health Check	Trigger SCCM 2012 client health check and remediation with maximum stagger of <maxStagger> seconds	Invokes <b>Ccmeval.exe</b> on the target devices.
<b>Instruction Runner</b> See <a href="#">Tachyon Instruction Runner</a> .	Instruction Runner	Any Tachyon instruction from the currently imported product packs can be run using this option.	