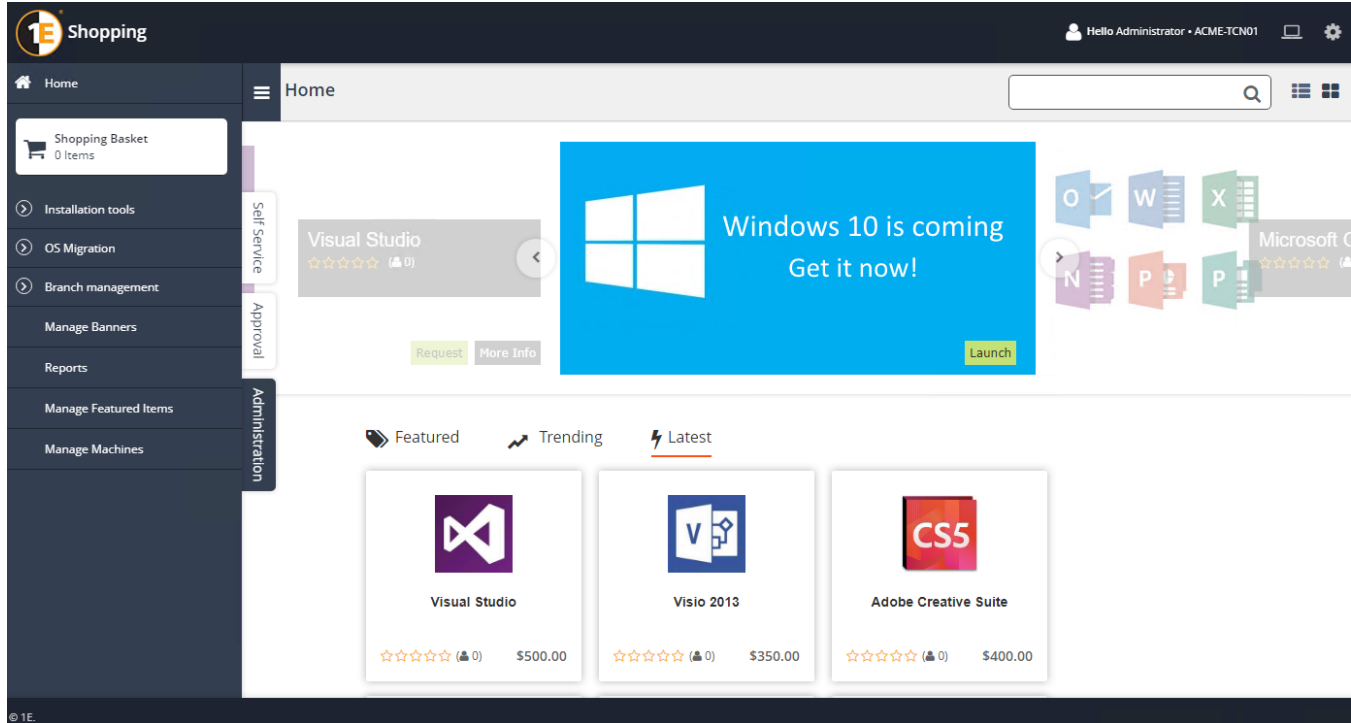


Shopping Web administration

Shopping includes a number of advanced features such as re-installing applications onto a rebuilt machine, copying the application fingerprint from one computer to another, Shopping for another user and Uninstalling applications from computer. This section describes each of these features and how they are accessed from the Shopping Web.

Administrative features are accessed from the Administration section in the Shopping Web. Only users with the specific permissions set in the Shopping Admin Console Settings Node or those who are member of an AD group specified here have access to administrative features. Branch administrators defined in a computer category have restricted access to administrative features –they can shop on behalf of other machines but can only search for computers referred to by the computer category.



If `ShowAdminTab=False`, computer category administrators cannot access the Administration section in the Shopping Web but can still shop on behalf of other machines.