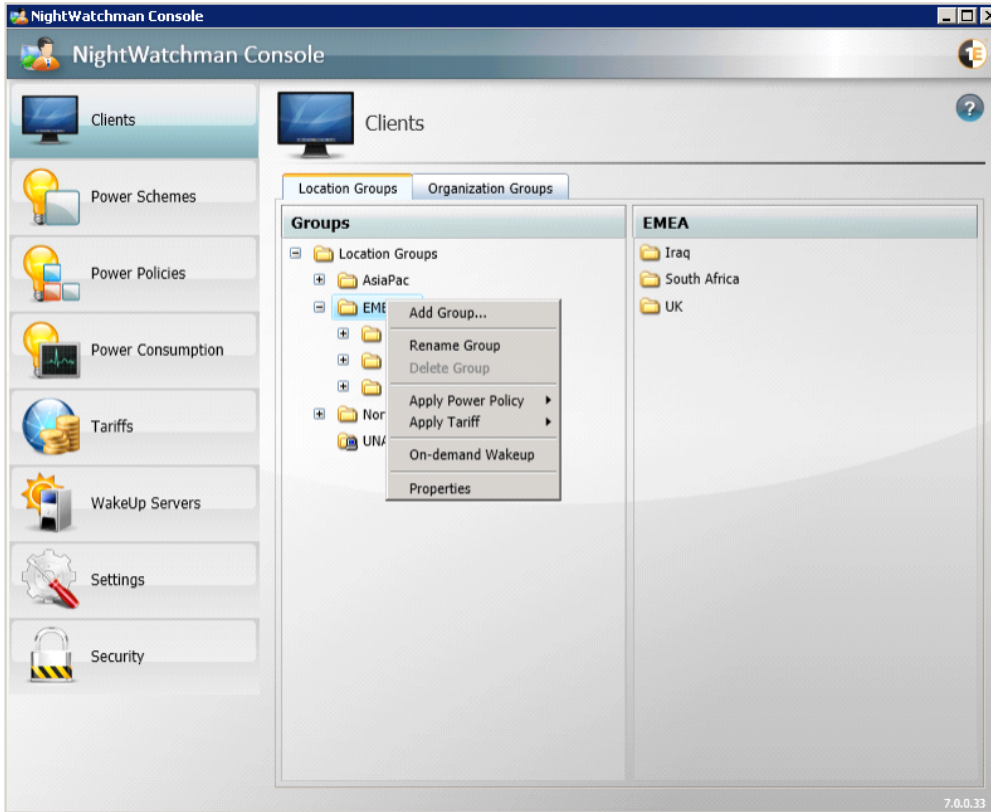


# Step through adding groups

## Adding groups

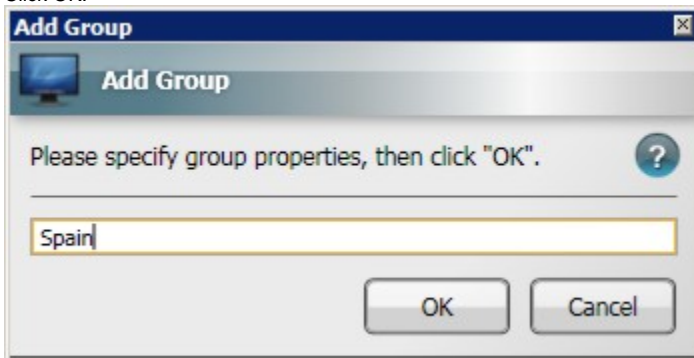
In this tutorial, we are going to:

1. Add the country Spain to the EMEA group.
2. Add a region for the newly created country.
3. Add a city for newly created region.
4. Add a building for the city.



To add Spain to the EMEA group:

1. Select the EMEA node and right-click with the mouse to display the context menu.
2. From the context-menu, select Add Group...
3. In the Add Group dialog, enter the name Spain.
4. Click OK.



To add the region Madrid to the newly created country group:

1. Select the Spain node and right-click with the mouse to display the context menu.
2. From the context-menu, select Add Group...

3. In the Add Group dialog, enter the name Madrid.
4. Click OK.

To add the city Madrid to the newly created region group:

1. Select the Madrid node and right-click with the mouse to display the context menu.
2. From the context-menu, select Add Group...
3. In the Add Group dialog, enter the name Madrid.
4. Click OK

To add the building 35 Castellana to the newly created city group:

1. Select the Madrid node and right-click with the mouse to display the context menu.
2. From the context-menu, select Add Group...
3. In the Add Group dialog, enter 35 Castellana.
4. Click OK.

The completed tree is illustrated below

